

SHOWDAILYTM

ACMEE 2025
16th International Machine Tools Exhibition



An **AIEMA** Initiative

19 - 23 June 2025

Chennai Trade Centre, Chennai, India

CONCURRENT SHOW

Artech 2025
AUTOMATION & ROBOTICS
TECHNOLOGY SHOW 2025

ORGANIZED BY



AIEMA
SINCE 1963

SUPPORTED BY



APPROVED BY



ISSUE - 3 | SUNDAY, 22 JUNE 2025



25⁺
YEARS

POWERING INDIA'S TECHNOLOGICAL EVOLUTION

From precision metal cutting to advanced manufacturing, S&T Group has been transforming Indian industry since 1996. Headquartered in Coimbatore, we have built our legacy on one simple promise: Making World-Class Technology Affordable.

25000+
MACHINE
INSTALLATIONS
Across India



CNC Machines

Engineering Without Limits

Smart Mill



Vertical
Machining Center



5-Axis Machining
Machining Center



High Speed Machining
Center (Mill Tap)



Double Column
Machining Center



Graphite
Machining Center



Vertical
Turning Lathe



Surface
Grinding Machine



Rotary Surface
Grinding Machine



Mini Genie
(CNC)



Horizontal Machining
Center (Optima Series)



Horizontal Machining
Center (Maxima Series)



Laser Machines

Shaping Tomorrow's Solutions

Sheet & Tube Laser Cutting



Tube Laser Cutting



Laser Cutting (Open Type)



Laser Cutting (Closed Type)



Laser Welding



Mastering Metal & Accessories

Medium Speed
Wire Cut EDM



High-Precision EDM
Technology



Conventional
Machine Excellence



Vertical Maching
Center



CNC Long Travel
Machining Center



Shrink Fit
Accessories



Corporate Office : 22, Vasanth Nagar, Singanallur, Coimbatore – 641 005, Tamil Nadu, India.

P: +91-422-2590810 | M: +91 +91 73587 12442 | E: info@stengineers.com W: www.stgroup.co.in

Visit Our Stall :Hall: G | STALL NO: G73





Experience the Value in our Machines & Solutions

Hall - D, Stall - D 25



JHF 400 HIGH SPEED Horizontal Machining Center

- Stroke: (X,Y,Z) - 600 mm x 500 mm x 500 mm
- Automatic pallet changer
- Pallet Size - 400 x 400 mm
- High speed Spindle- 12000 rpm
- Twin Arm type ATC
- No. of Tools - 30 Nos
- Rapid Traverse Rate - 48 m/min



JH 550 HEAVY DUTY Horizontal Machining Center

- Stroke: (X,Y,Z) - 800 mm x 800 mm x 850 mm
- Automatic pallet changer
- Pallet Size - 500 x 630 mm
- Max. Spindle speed - 6000 rpm
- Spindle taper - BBT 50
- No. of Tools - 60 Nos
- Rapid Traverse Rate - 48 m/min



FOLLOW US ON :
f in x y o g
LMW CNC



INDIA'S FINEST RANGE
OF CNC MACHINES

TURNING

MILLING

TURNMILL



www.lmwcnc.com

SHOWDAILY™

ACMEE 2025
16th International Machine Tools Exhibition

CONCURRENT SHOW

Artech 2025
AUTOMATION & ROBOTICS
TECHNOLOGY SHOW 2025

An AIEMA Initiative

19 - 23 June 2025

Chennai Trade Centre, Chennai, India

ISSUE - 3 | SUNDAY, 22 JUNE 2025

ORGANIZED BY



SUPPORTED BY

APPROVED BY

AceMicromatic Group

www.acemicromatic.net | Hall & Stall: E/42

MACHINE TOOL SOLUTIONS

Acing Innovation with Purpose and Precision

At ACMEE 2025, Ace Designers Ltd, a flagship of the AceMicromatic Group (AMG), is making a powerful statement about innovation, automation, and industry-focused solutions. With a line-up of machines designed to meet the evolving needs of Tier-2 and Tier-3 customers, MSMEs, and advanced sectors like aerospace and medical, it is underlining its dominance in precision engineering and digital manufacturing.



The team of Ace Designers Ltd, a flagship of the AceMicromatic Group (AMG), at the company booth at ACMEE 2025.

With a robust presence in Tamil Nadu—especially in the automotive manufacturing ecosystem—Ace is strategically showcasing solutions that reflect local industry demands and national ambitions such as 'Make in India' and Industry 4.0.

"Chennai's strong automotive base and its growing interest in smart manufacturing made it important for us to bring machines that are not just capable, but also accessible and future-ready," says Veeramani V, Regional Head – Operations, Tamil Nadu Region, Ace Designers Ltd – Marketing & Service Division.

Smart, Scalable Solutions on Display

"The machines displayed at ACMEE 2025 have been chosen based on region-specific market demand such as the strong automotive presence in Chennai, growth sectors like medical and aerospace, and preferences of the local cus-

tomers base along with the installed machine population," he adds.

Following are the innovations featured:

J300LM-FLA – Front Loading Automation

Designed for Tier-2 and Tier-3 customers, the J300LM-FLA offers a

SCHUNK is a global leader in the equipment of modern production lines and robot systems.

Hall E, Booth No. E41

schunk.com →

Hand in hand for tomorrow





Source: Magic Wand Media



VEERAMANI V
Regional Head, Operations – Tamil Nadu Region
Ace Designers Ltd – Marketing & Service Division

The machines displayed at ACMEE 2025 have been chosen based on region-specific market demand such as the strong automotive presence in Chennai, growth sectors like medical and aerospace, and preferences of the local customer base along with the installed machine population.



Source: AceMicromatic Group

simple, cost-effective automation solution with high reliability. It is ideal for mass production needs in the automotive components industry.

CTM-06M – Compact Turnmill Center

Suited for the automotive and medical industries, the CTM-06M allows multiple operations in a single setup, effectively reducing handling and cycle times. It is perfect for high-precision, multi-operation batch production.

SHA-20 – 3-Axis Sliding Headstock Machine

Targeting medical, electronics, and automotive component industries, the SHA-20 is engineered for producing small and slender high-precision parts in large volumes. It also supports bar feeder integration to boost productivity.

MCH400 – Horizontal Machining Center

Built for the automotive, heavy engineering, and valve industries, the MCH400 combines high-speed machining with excellent metal removal rates. Its rigid structure ensures durability, especially in tough material machining.

1370V – Vertical Machining Center for Die & Mold

Serving cold/hot forging die makers, casting pattern makers, and plastic moulders, the 1370V offers a large table capacity and high-precision machining. It is available with 4th and 5th axis options for complex profiling and multi-face operations.

CLG4015 – C: Compact Centerless Grinding Machine

Preferred by manufacturers in the automotive and general engineering sectors, the CLG4015-C delivers accurate Thru-feed and In-feed cylindrical grinding. It is ideal for medium to high-volume production of shaft-type components.

TFC 1000 V: Vertical Facing & Centering Machine

This compact vertical setup is designed for shaft components in the automotive, pump, and general engineering industries. It features a space-saving design and allows for easy loading and unloading.

ECO 3015 – Laser Cutting Machine

The ECO 3015 addresses the needs of the sheet metal, electrical, and general engineering industries by offering high-speed, precision laser cutting across various metals. Its energy-efficient design makes it well-suited for MSMEs and fabrication units.

Smart IIoT Solution – Industry 4.0 Ready

This IIoT-ready solution supports real-time monitoring, predictive maintenance, and analytics. With applications across automotive, medical, die & mold, and fabrication sectors, it enhances machine utilization, minimizes downtime, and improves decision-making.

Metal 3D Printing Machine STLR 120 – Additive Manufacturing Solution

Catering to aerospace, medical, automotive R&D, and defence sectors, the STLR 120 enables the production of complex, high-strength metal parts. It is ideal for low-volume production and rapid prototyping.

AMG's Robust Position in Chennai

AMG enjoys a strong presence in Chennai, especially owing to the city's robust automotive industry. The company has installed over 3,500 CNC Turning Centers, making it a dominant player in high-volume automotive component production. Additionally, with more than 1,500 Vertical Machining Centers used extensively in die, mold, and component machining, the Group has solidified its footprint in precision manufacturing. The company holds a 60 per-

cent market share in cylindrical grinding machines, reflecting its leadership in high-precision finishing.

"Moreover, AMG has been a pioneer in IIoT and Industry 4.0 solutions for over 15 years, offering deep digital manufacturing expertise. We also lead in customized Special Purpose Machine (SPM) solutions. Expanding our portfolio further, we have recently added advanced laser cutting and metal 3D printing machines, enhancing our commitment to innovation and next-gen manufacturing," shares Veeramani.

Automation and Industry 4.0 Integration

With over 15 years of leadership in Industrial IoT solutions, AMG has consistently pioneered smart manufacturing technologies. Over the past three years, it has intensified its investment in automation, completing more than 30 installations across diverse industries.

To further accelerate its capabilities, it has established a dedicated team for industrial automation. "The team specializes in robotic integration, smart fixtures, and material handling automation—all designed to boost operational efficiency. Our solutions also enable seamless IIoT integration for real-time machine monitoring, advanced data analysis, and predictive maintenance, making us a trusted partner for manufacturers transitioning to Industry 4.0," reveals Veeramani.

Driving Innovation Through Collaboration

AMG continues to strengthen its R&D efforts by focusing on high-

impact sectors such as electric vehicles (EVs), electronics manufacturing services (EMS), medical devices, aerospace, and education. Current R&D initiatives include developing precision machining solutions specifically for EV and aerospace applications, creating multi-operational machines tailored to the complex needs of medical device production, and advancing micro-machining technologies for electronics. Additionally, AMG is investing in digital platforms to support educational training modules. The Group is also deeply engaged in academic collaboration, partnering with technical universities for joint research, and offering students valuable exposure through internships and live industrial projects. Through Industry 4.0 workshops and innovation contests, AMG fosters a culture of learning and experimentation that benefits both academia and industry.

Supporting MSMEs and SMEs

The Group has built a robust ecosystem to support Micro, Small, and Medium Enterprises (MSMEs and SMEs). The company offers a one-stop shop where MSME customers can find everything from stabilizers and compressors to tool holders and fixture solutions, all made available through its network of Eco Partners. Moreover, AMG works closely with both government and private financial institutions to provide easy financing options.

This customer-centric approach has earned AMG strong loyalty, with more than 60 percent of its buyers in this segment being repeat customers—clear proof of the trust and satisfaction the company delivers. **SD**

COORDINATE MEASURING MACHINES

ZEISS DuraMax for Harsh Conditions

Quality assurance is demanding and CMM requirements are high – especially in the production environment. ZEISS DuraMax combines robustness, precision and efficiency, making it the perfect choice for at-line measurement directly in a production hall.

ZEISS DuraMax is not deterred by harsh environmental conditions and withstands even high temperatures. In conjunction with the ZEISS VAST XXT-Sensor it enables fast single-point measurements as well as scanning of contours and free-form surfaces, making fixed gauges superfluous. Efficiency is ensured through an optimal measurement volume-to-footprint ratio. Speed is enhanced by reduced operating times and fast measurement cycles. Precision is maintained even in harsh environments, delivering reliable results.

To ensure temperature resistivity and reliable precision, the machine features glass-ceramic scales on all axes, enabling stable measurements within a temperature range of +18 °C to +30 °C. The IP54-rated base protects the computer hardware, and an optional HTG variant extends the usable temperature range further. Pneumatic vibration isolation is also available as an option.

ZEISS DuraMax offers exceptional speed and productivity. Fast scanning is made possible with ZEISS VAST XXT, improving the evaluation of tolerances. ZEISS VAST probing can reduce

measurement time by up to 30 percent, and a duplex system increases overall throughput.

The machine is designed for efficiency and optimal accessibility. Its space-saving design results in a small footprint, while the generous measuring volume is easily accessible. Loading can be done from three sides and from above, all at an optimal working height.

The intuitive and user-friendly ZEISS CALYPSO software enhances usability. Additionally, ZEISS CALYPSO express is particularly easy to learn and program, making it suitable for both experienced users and beginners.



Source: Carl Zeiss India Pvt Ltd

Highly flexible in its applications, ZEISS DuraMax supports four-axis measurement and can be fitted with an optional rotary table. It requires no compressed air, contributing to easy installation and maintenance.

Industries that benefit from ZEISS DuraMax include production manufacturing, automotive, aerospace, medical, and electronics.

Exemplary parts measured with this machine include small housings and gears, CNC-machined components, vacuum pumps, small blades (LPC, HPC), hip parts, inhalers, and connectors. **SD**

Carl Zeiss India Pvt Ltd
www.zeiss.co.in | Hall & Stall: F/44

AceMicromatic®
Group

INDIA'S LARGEST MACHINE TOOL GROUP

Showcasing

ADVANCEMENTS & INNOVATIONS

In Machine Tool Technology



19-23 June 2025
10:00 am – 06:00 pm

Visit us

AceMicromatic Hall

Stall No: **E42**

Visit our Website
acemicromatic.net

**WE ARE NOW
AMALGAMATED
TO SERVE YOU BETTER**



Streamlined Processes	Greater Resources
Enhanced Services & Support	Unchanged Values for same commitment & trust

A NEW ERA OF EXCELLENCE

CNC MACHINE TOOLS

Focused on Innovation and Self-reliance



Source: Jyoti CNC Automation

When it comes to selecting machines for trade fairs, Jyoti CNC doesn't believe in a one-size-fits-all approach. As Sureshkumar V, AVP-Sales, Jyoti CNC Automation Ltd, explains the company's strategic philosophy, "We carefully select each machine based on three main ideas: the type of industry in the area where the fair is held, how our products can benefit the region's customers, and how new technologies meet their special requirements."

Solutions that Fit the Bill

Understanding that South India has a strong presence in sectors like automobile parts, pumps & valves, textile machinery, and general engineering, Jyoti CNC has chosen models designed for precise, high-volume, and affordable machining for ACMEE 2025. "We are showcasing DXG 200, TS 200, and BTM 100 machines from our automation solutions," states Sureshkumar. "Our booth is more than just a display; it shows how Jyoti CNC connects its technology with what local manufacturers need. Our goal

SURESHKUMAR V
AVP-Sales
Jyoti CNC Automation Ltd

From choosing the right machine to securing necessary funds, we provide end-to-end support, helping MSMEs and SMEs boost productivity and remain competitive in today's fast-evolving manufacturing landscape. Our mission is to make precision engineering accessible, affordable, and achievable for all tiers of industry.



Source: Jyoti CNC Automation

Jyoti CNC Automation Ltd
www.jyoti.co.in | Hall & Stall: B/35

is not just to sell products but to truly help solve problems and improve our customers' skills."

Fueling Chennai's Auto Engine

Chennai is a major center for automotive manufacturing and has steadily favored small- and medium-sized standard Turning Centers (VMCs) made by Jyoti CNC. "These

machines meet the needs for both accuracy and high production in making auto parts in the area," asserts Sureshkumar.

"As industries in Chennai focus more on being efficient and relying less on manpower, they are looking into machine models that can produce more and have built-in automation features," he says. This trend shows that the market is

changing and needs better manufacturing solutions. "Now speed, reliability, and automation are important factors in making decisions," he further mentions.

No Retrofit Just Revolution

"At Jyoti CNC, we have taken a proactive and innovation-driven approach to meet the rising demand for automation and robotics, especially in the era of Industry 4.0 and IoT integration," explains Sureshkumar. "Rather than retrofitting external automation systems, we have engineered and launched a new range of CNC models with inbuilt automation." These built-in automation models offer customers a distinct competitive edge, ensuring better ROI and long-term cost savings.

"Moreover, to complement hardware innovations, we have developed a proprietary Industry 4.0 software platform called '7th Sense', specifically tailored for the nuanced needs of CNC machine shops," he continues. "This intelligent tool enables real-time monitoring, data-driven decision-making, predictive maintenance, and seamless connectivity across manufacturing ecosystems—empowering users to become truly future-ready."

Smaller Units, Bigger Impact

Aware that MSMEs and SMEs are the backbone of industrial growth, Jyoti CNC is committed to empowering them with the right technology solutions. "Our dedicated team of highly skilled experts works closely with micro and small enterprises to understand their unique application needs and guide them in selecting the most suitable and cost-effective machining solutions," emphasizes Sureshkumar. **SD**



Source: Meiban Engineering Technologies

Meiban Engineering Technologies Pvt Ltd | www.meibanengg.com | Hall & Stall: B/78

CNC CHUCKER

Twin Spindle CNC Chucker MW100HG

Muratec MW100HG is a twin-spindle CNC chucker that provides exceptional rigidity for high-precision jobs and improved productivity. Equipped with column and turret bar construction and a high-speed three-axis gantry loader, this machine boasts a load/

unload time of fewer than 5 seconds and can produce parts in as little as 16 seconds. The MW100HG also has twin high-speed, three-axis CNC gantry loaders, allowing dual operations on spindles for even more productivity. When compared to similar models in the market, Muratec

MW100 is incredibly compact and fast, making it the perfect solution for line planning, as well as for reducing cycle times and saving space of the production floor. MW100G is available in six different standard cell configuration specifications to meet varied requirements in production and line planning. **SD**

INTERNATIONAL CONFERENCE ON AUTOMATION AND ROBOTICS

AI, Automation & Human Synergy Take Focus at ACMEE 2025 Conference

Day two of the International Conference on Automation and Robotics, organized by AIEMA in collaboration with IIT Madras at ACMEE 2025, continued to explore the transformative power of technology in manufacturing. The sessions delved into Industrial AI, human-machine collaboration, and next-gen solutions like Agentic and Generative AI.

The day opened with a session titled 'Robotics for Industry and Industrial AI' by Murali Chandrahasan, Head & Senior Director – Intelligent Industry, Capgemini Invent. His talk centered on how Industrial AI applications can uplift not just large enterprises but also MSMEs. "Industrial AI apps are ready to improve overall manufacturing efficiency – not only for big companies but also for MSMEs," said Chandrahasan. "They help in improving the complete manufacturing lifecycle management." He explained the role of AI Agents—autonomous software systems that make decisions and interact intelligently. "Gradually, the entire market is going to depend on Agentic AI. Agentic and Generative AI are going to deliver big savings in manufacturing," he noted.

"AI is a Helper, not a Disrupter"

The second session, originally intended as a panel discussion on 'Human in the Loop in the Age of Smart Automation,' evolved into a series of focused individual presentations.



Source: Magic Wand Media

Meenakshi Sundaram, CTO, Amalgamations Group, emphasized the need for clarity and purpose in automation, stating, "The most important thing is to decide what is our requirement. The process must be automated without disturbing the rhythm of the manufacturing environment." He also pointed to the urgency for collaboration at the Tier-2 and Tier-3 level, and cautioned that automation in India should focus on improving product quality, not just quantity.

Challenging fears about job loss, Madhavan Srinivasan, Vice Chairman and Managing Director, Kripya Solutions, "As long as automation does

not become autonomous, it is good and safe. I don't think automation is killing jobs — it's creating a transformation. Smart manufacturing is about re-skilling, not sacking." In a hands-on demonstration, MD Ramaswami, Advisor and Investor, discussed Lifelong Machine Learning (LML) and the effective use of tools like ChatGPT. "The key skill is to know 'what you want to know'. If your judgement questions the information, ask better, more specific questions to gain clarity," he stressed. Jemina Joy Joseph, Director – Gen AI & Agentic AI Practice Head, ProV International, explained the strategic power of Generative AI in manu-

facturing. "It's transforming processes by using machine learning and computational creativity to optimize designs, streamline production, and enhance overall efficiency. In today's fast-paced world, success is about timely actions and decisions."

Wrapping up the session, Koushik Ramani, Managing Partner, NetworkGain Consulting, urged businesses to adopt a forward-looking mindset.

"AI is not just for techies—it's for everyone. It's here to stay. We need to change our mindset and see AI as a helper, not a disrupter. It can reduce downtime and rework in the workshop." **SD**



Source: Magic Wand Media

Blum-Novotest India MD Shyam BV Applauds ACMEE 2025

As a buyer and a visitor in the bustling halls at ACMEE 2025, Shyam BV, Managing Director, Blum-Novotest India—a subsidiary of Blum-Novotest GmbH, a leading name in cutting-edge measurement and testing technology—marks his presence, reflecting on what makes this year's 16th edition event stand out. "This time I am a visitor at ACMEE and not an exhibitor," he notes, clearly impressed by the scale and upgrades.



SHYAM BV
Managing Director
Blum-Novotest India

Venue Par Excellence

Shyam notes that the venue transformations are truly world-class. "The halls feel like an international exhibition space—well-designed, airy, and thoughtfully appointed. Even the small details, like clean restrooms and, most importantly, the ease of parking, make a big difference," he says. For him, it's not just the infrastructure that stands out, but the growing energy and momentum among attendees and participants—creating

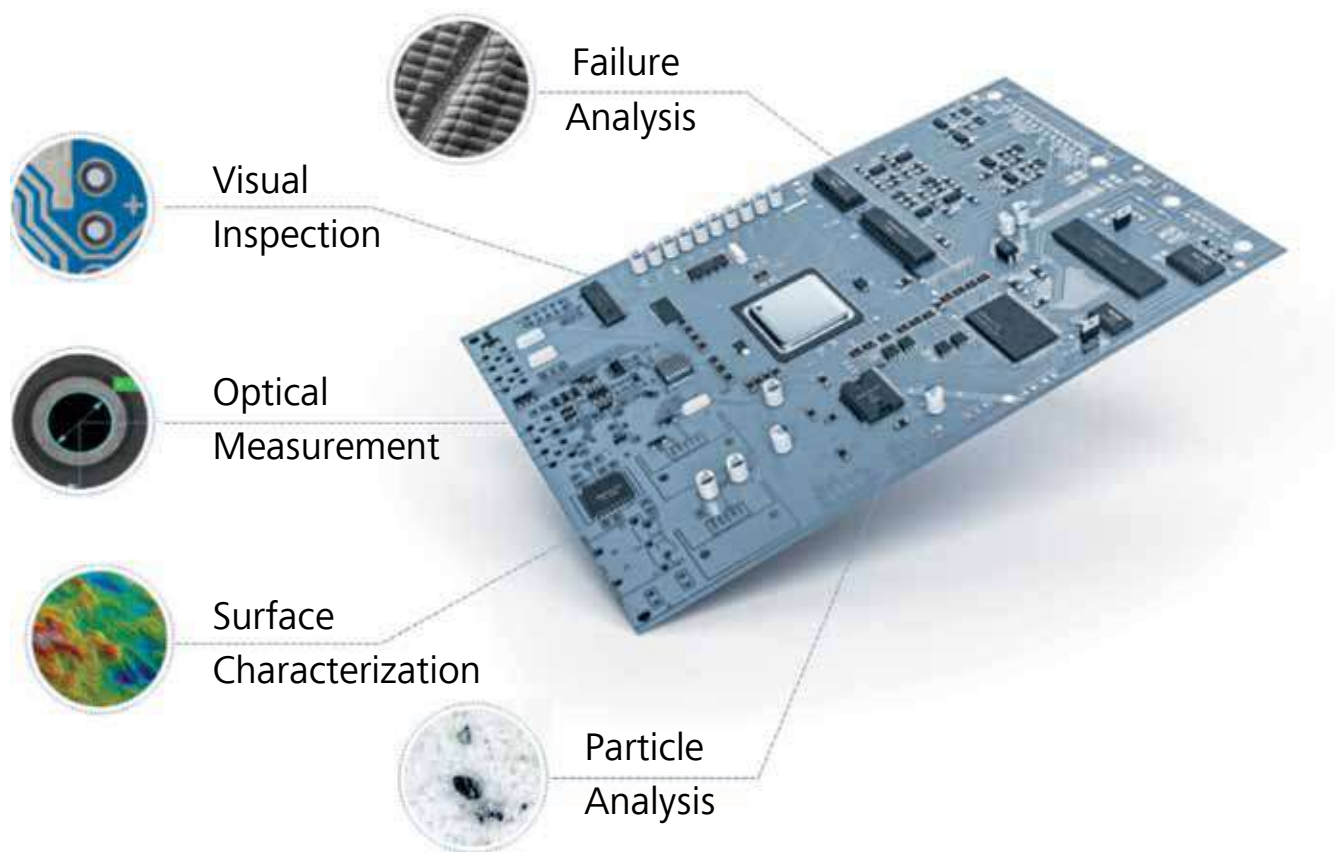
a natural environment for engagement, especially when the venue is this welcoming.

Looking Forward

The progress on exhibit and the seamless management of the organizers—Ambattur Industrial Estate Manufacturers' Association (AI-EMA)—lead Shyam to look ahead with optimism, as he states, "Blum-Novotest will definitely be back on the exhibitor list in the next edition of ACMEE." **SD**



ZEISS offers a wide range of solutions for Quality in Electronics Manufacturing



Coordinate Measuring Machine



Scanning Electron Microscope



X-Ray Microscopy



Optical Measuring Machine

Unlock the Future with ZEISS:

Lets meet at ACMEE 2025. Find Us Here!

Hall :F
Stall :44

19th to 23rd June 2025

